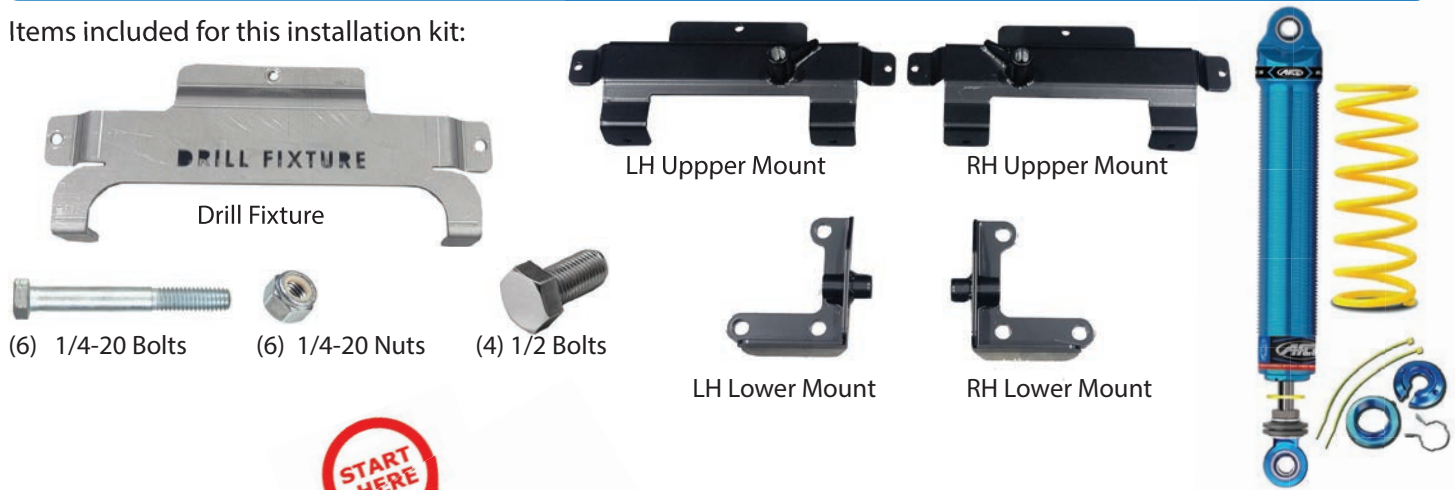




MULE SHOCK KIT

Thank You for your purchase. We STRONGLY recommend reading these instructions in full before starting this install.

Items included for this installation kit:

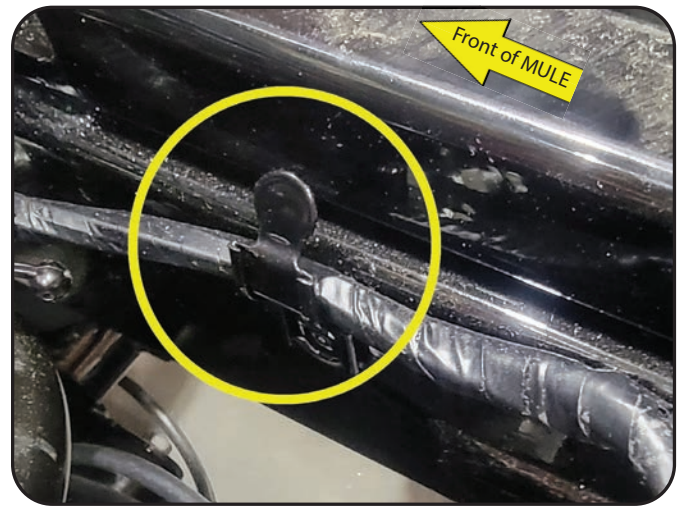
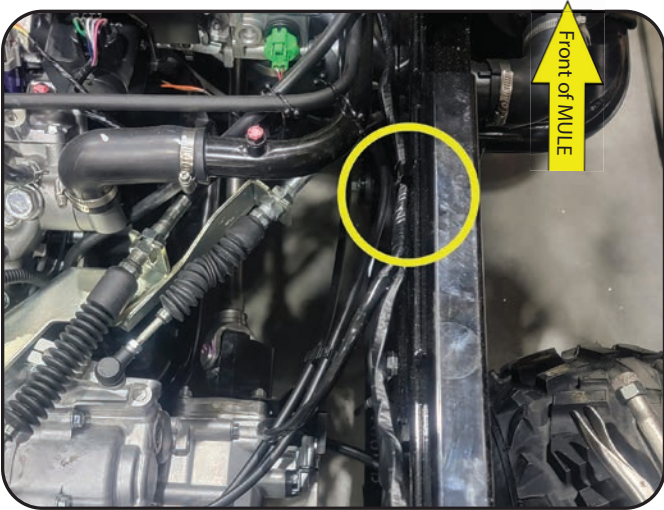


Check Bracket Threads

We suggest to check the threads on all brackets as it will make for a smoother install. While we do check them before packaging, it is good practice to double check. A 1/2-20 tap can easily clean up any issues.

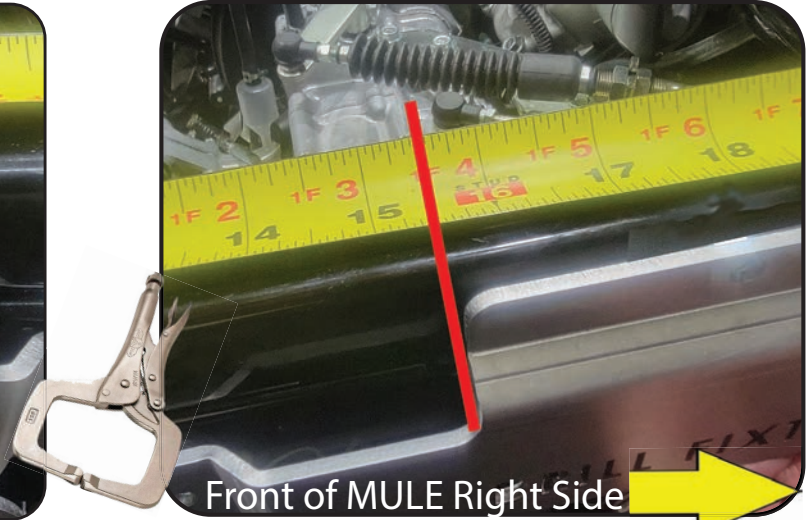
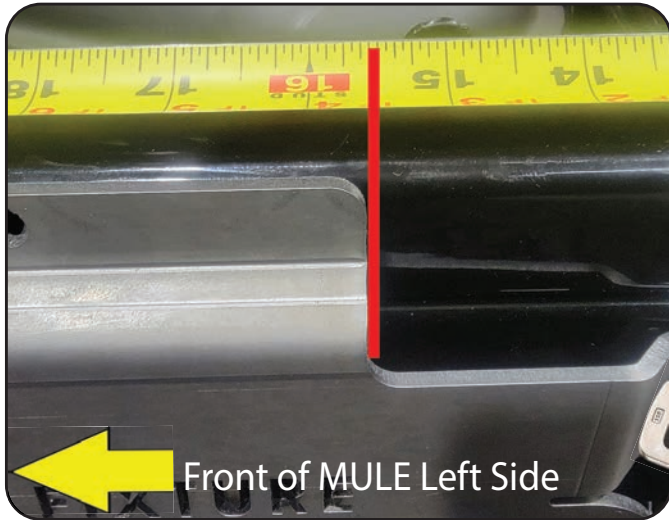
Shocks and Springs may vary by make/color based on availability!

Wire Harness Clip Removal

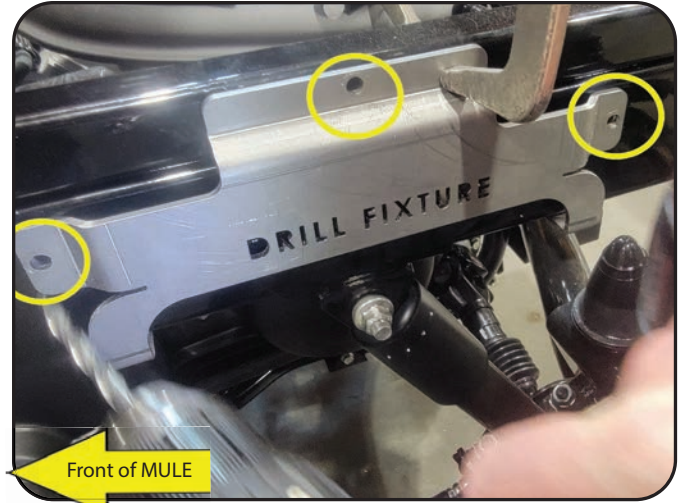
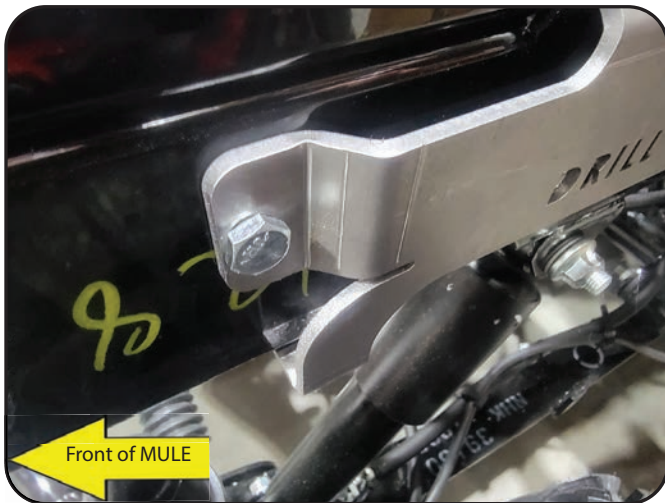


There is a metal tab on the right side frame rail just forward of the factory upper shock mount that retains the wire harness. Remove this tab as it will allow safer movement of the wires during install and for the brackets you will be installing.

Upper Bracket Drilling/Install

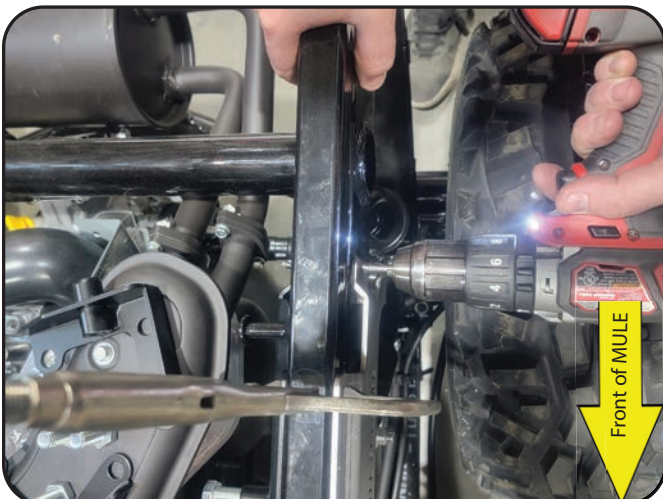


On each frame rail, measure 15 1/2" from the back of the frame forward. Place/Hold the Drill Fixture at that measurement at the upper tab (shown in red). We suggest holding in place with C-Clamp or other applicable type clamp.



For drilling, you will need a **.281 Drill Bit**. We suggest after first hole is drilled to install and tighten one bolt/nut to help retain the Drill Fixture.

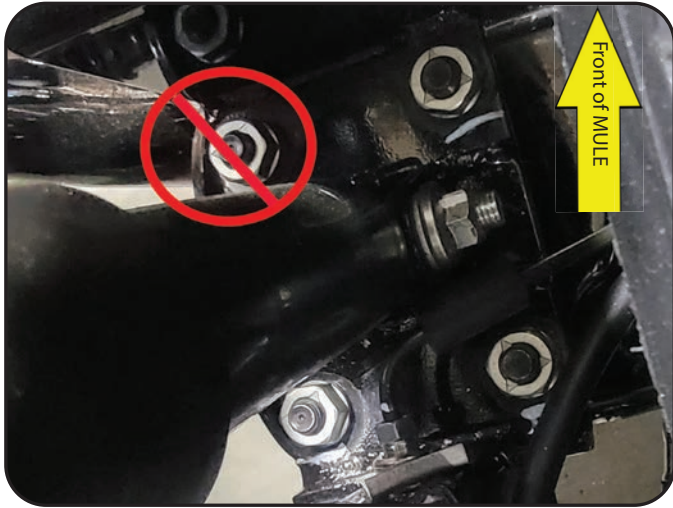
Drill through frame at three holes on Drill Fixture, being certain to keep drill straight and the fixture in place. You will be drilling outside inward.



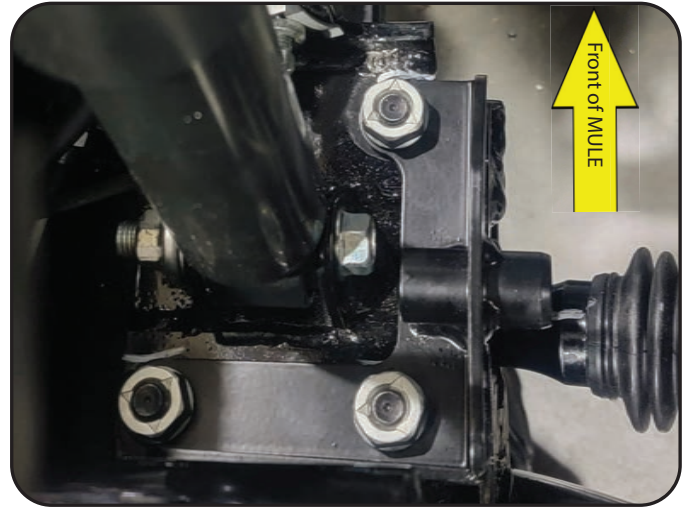
Use caution as not to hit wire harness or other items in the engine compartment.

Upper Mounting plates fit to the inside of the frame rail. Install/tighten all three bolts on each plate. Shown is LH side.

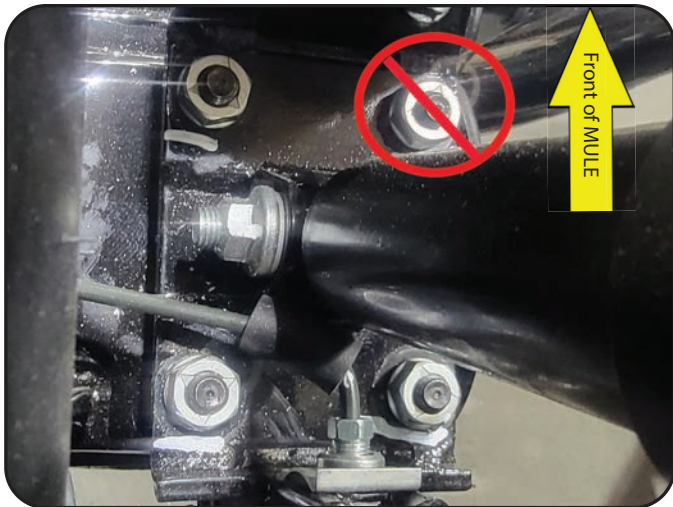
Lower Bracket Install



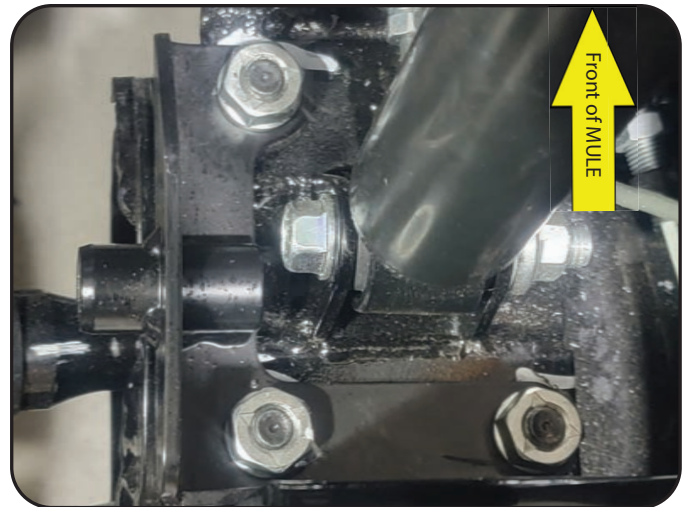
This is top view of Left Side Shackle Mount. You'll need to remove the three nuts. Do Not remove the LF nut. Be extra careful to not let the rear shackle fall out.



Install Left Side Lower Shock Mount Bracket as shown and re-install/tighten the three nuts.



This is top view of Right Side Shackle Mount. You'll need to remove the three nuts. Do Not remove the RF nut. Be extra careful to not let the rear shackle fall out.



Install Right Side Lower Shock Mount Bracket as shown and re-install/tighten the three nuts.

Continued on back page.....

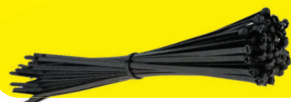


Coil Over Shock Install



Install Coil Over Shock Assemblies to upper and lower mounting brackets. Adjust the shock collars to your preferred setting. If applicable, tighten set screw on lower collar after you have completed adjustment.

Recheck all mounting hardware.



Upon completion of install, use a wire tie and attach the wire harness to the right side upper bracket going through the additional holes on the bracket, making sure the harness is free from any obstruction.



Hepfner Racing Products
2133 Constitution Avenue
Hartford, WI 53027
(262) 457-5015

email: hrpsales@ghilaser.com